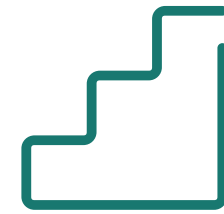


Starting Strong – Career Advice for Emerging Landscape Architects



LEADERSHIP
DEVELOPMENT
PROGRAM

CLARB

September 30, 2025
3:00 – 4:00 p.m. EDT

Website Tech Tips and Reminders



Please mute your microphone unless presenting.



Chat function on bottom of screen is available – and presenters will see questions posted.



This event is being recorded. Recordings will be emailed out within a week of the event.



Closed captioning is available. To enable this feature on a computer, click “Live Transcript” and “Show Subtitle.” For users on a phone or tablet, captioning will be enabled automatically.

Show Subtitle

View Full Transcript

Subtitle Settings...

cc

Live Transcript

Reactions

Today's Presenters



**Edward
Kinney,**
Moderator



**Candace
Dillingham,**
Panelist



**Paul
Kissinger,**
Panelist



**Lindsey D.
Smith,**
Panelist

Candace Dillingham, ASLA, PLA



Thank You for
Voting Us One of
Your Favorites for
**OUTDOOR
LIVING**



SKII LANDSCAPE ARCHITECTURE
618 E 3rd, Ste 4 | Tulsa | candace@skiila.com | 918.576.9138



Paul Kissinger, FASLA, PLA

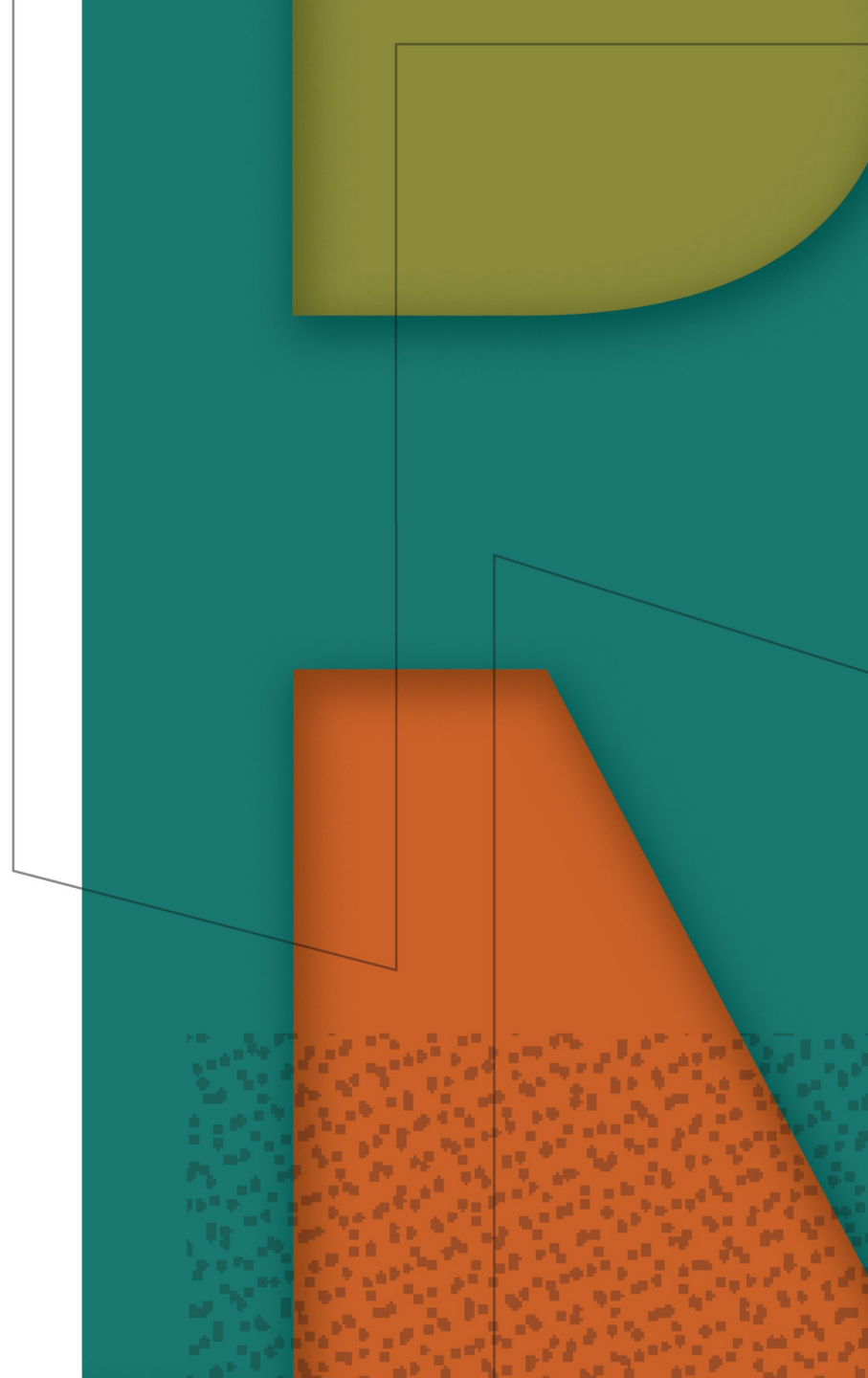


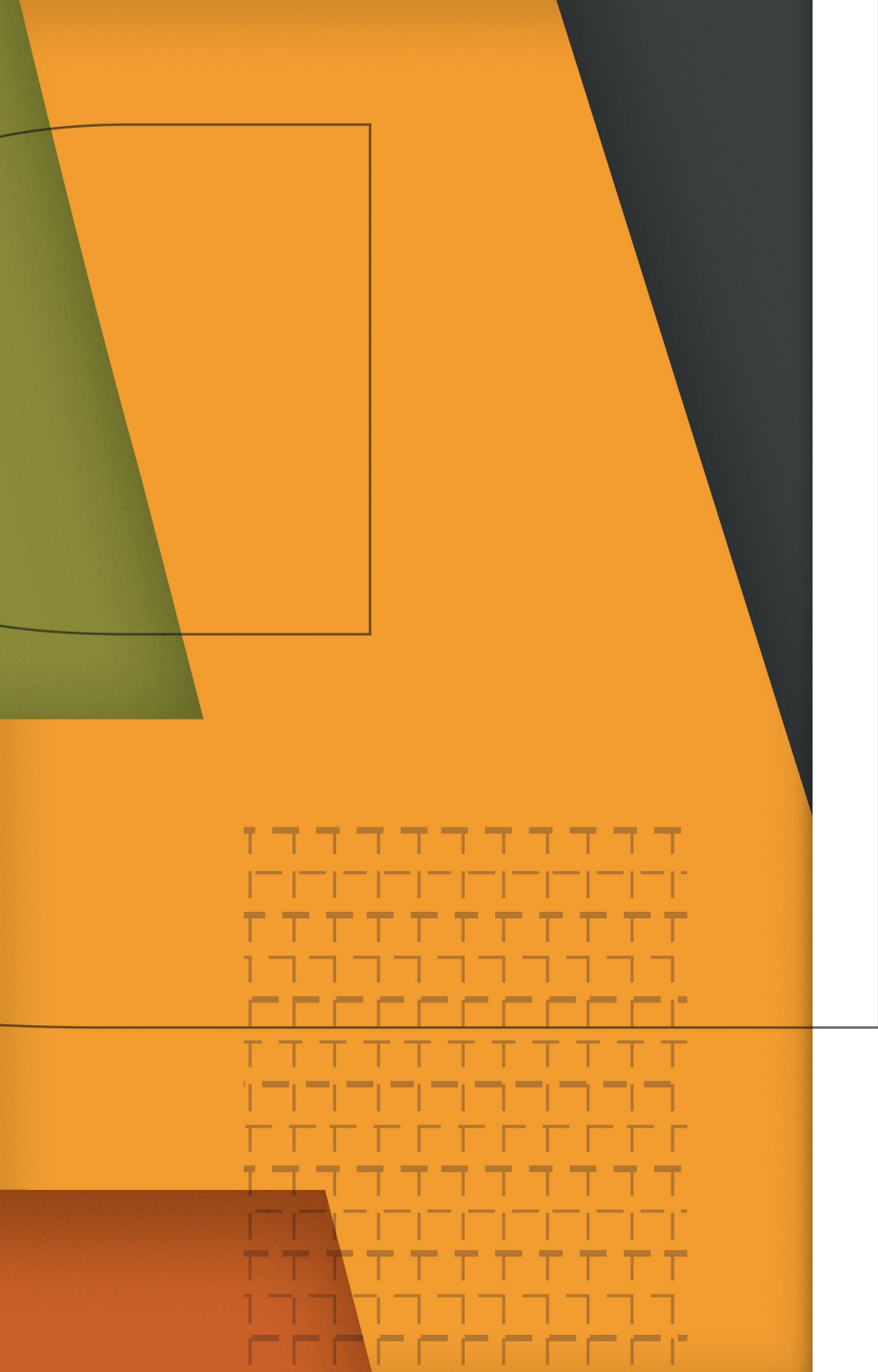
Lindsey D. Smith, ASLA, PLA



Topics we'll cover

- Choosing your path & company culture
- Negotiation & advocacy
- Work/life balance & career advancement
- Mentorship, professional associations & giving back

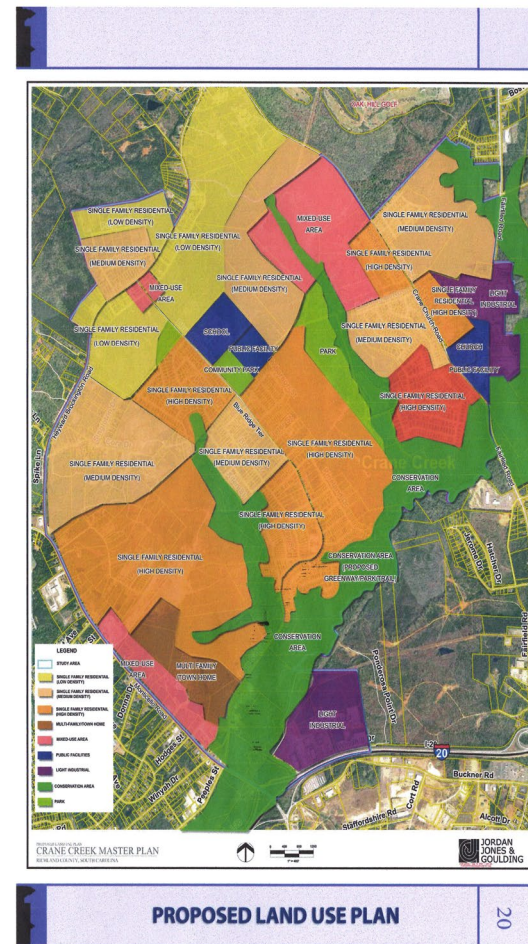
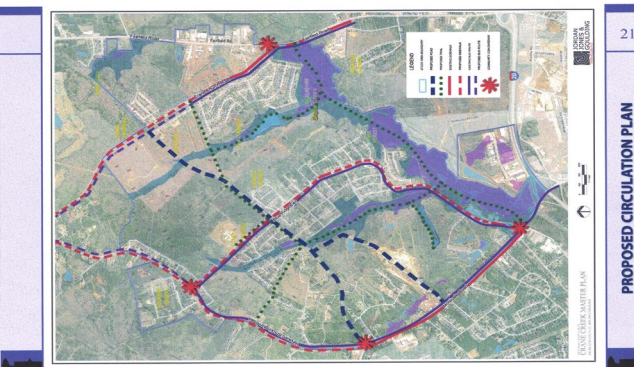
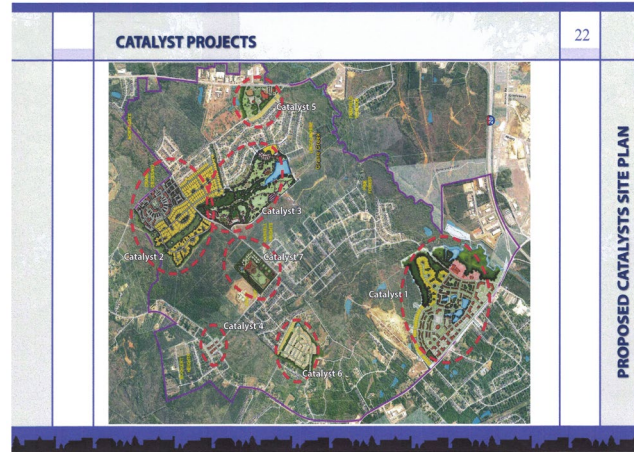




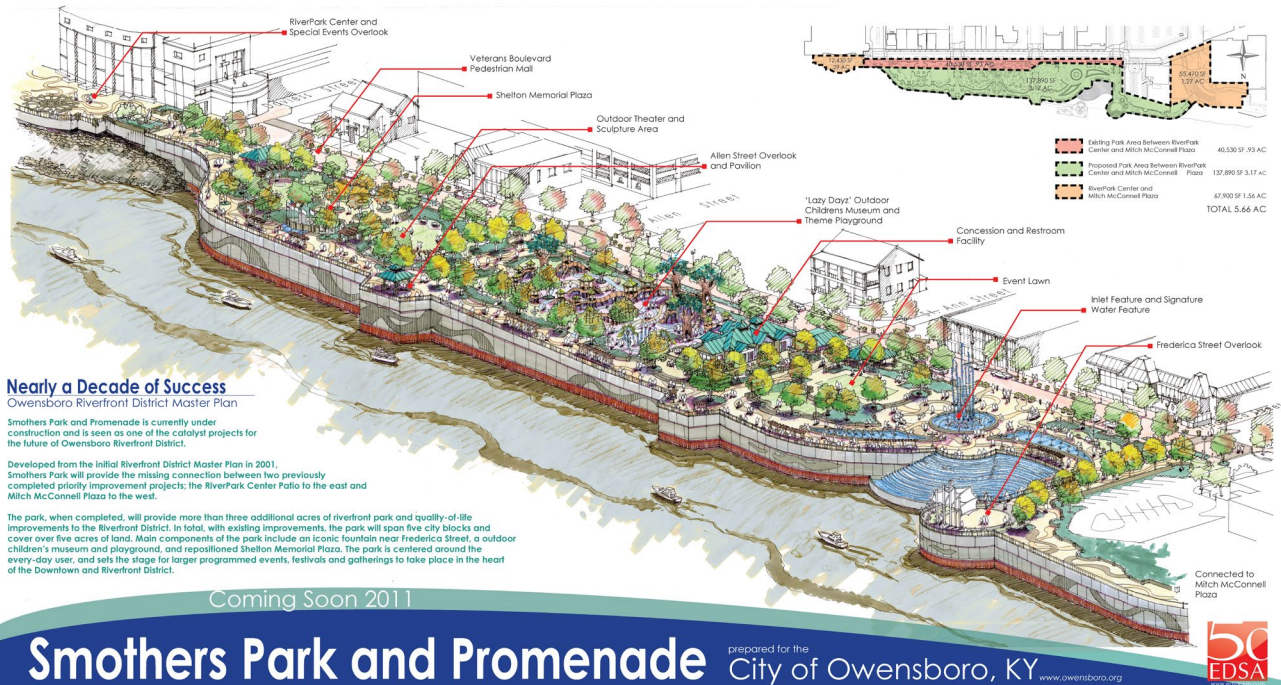
Looking back, how did each stage
of your career shape your success
as a landscape architect?

Can you share a project you learned
the most from?

Lindsey's projects



Paul's projects

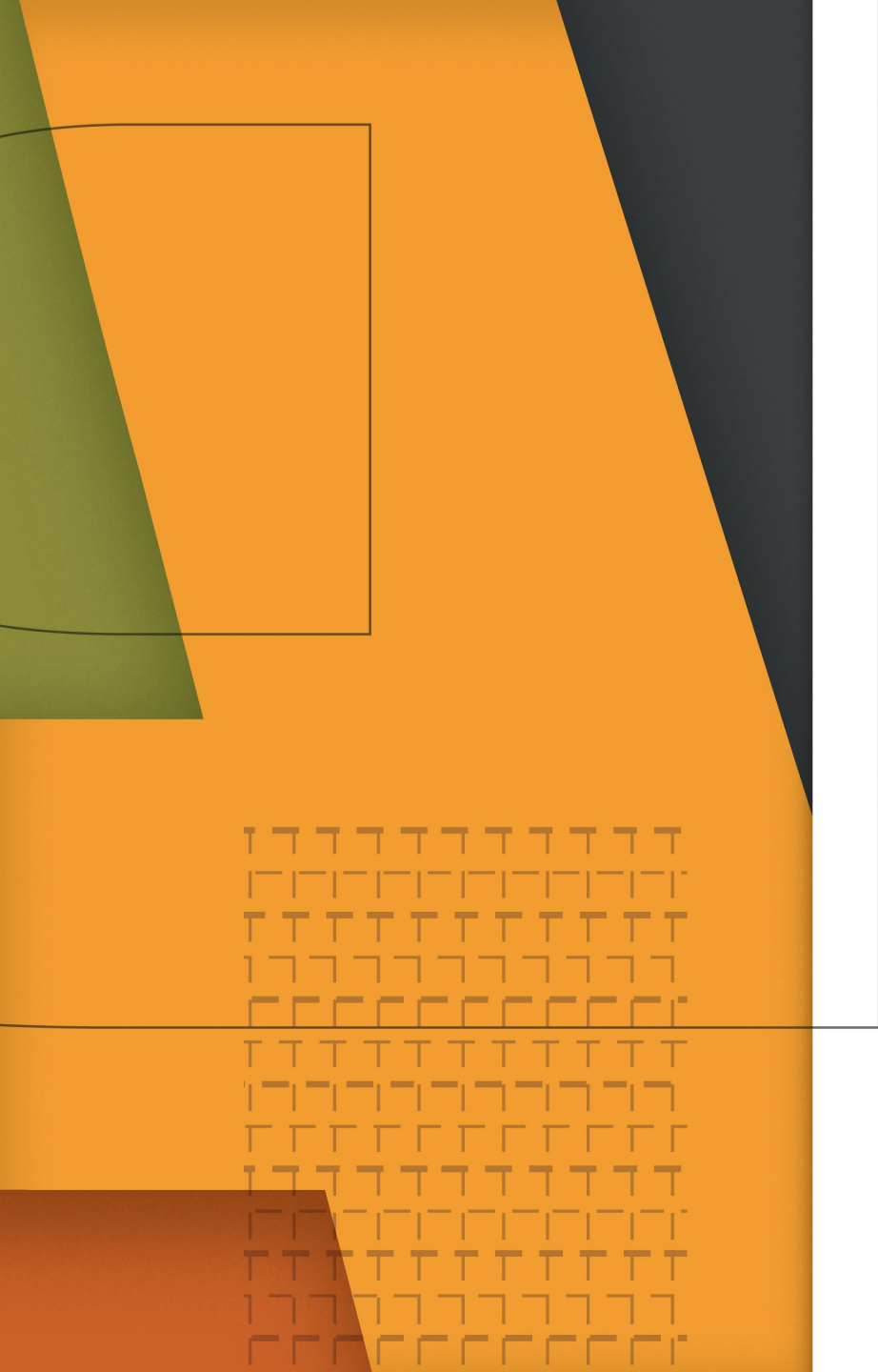


Candace Dillingham-Skii Landscape Architecture Projects



Skii Landscape Architecture Projects- Continued





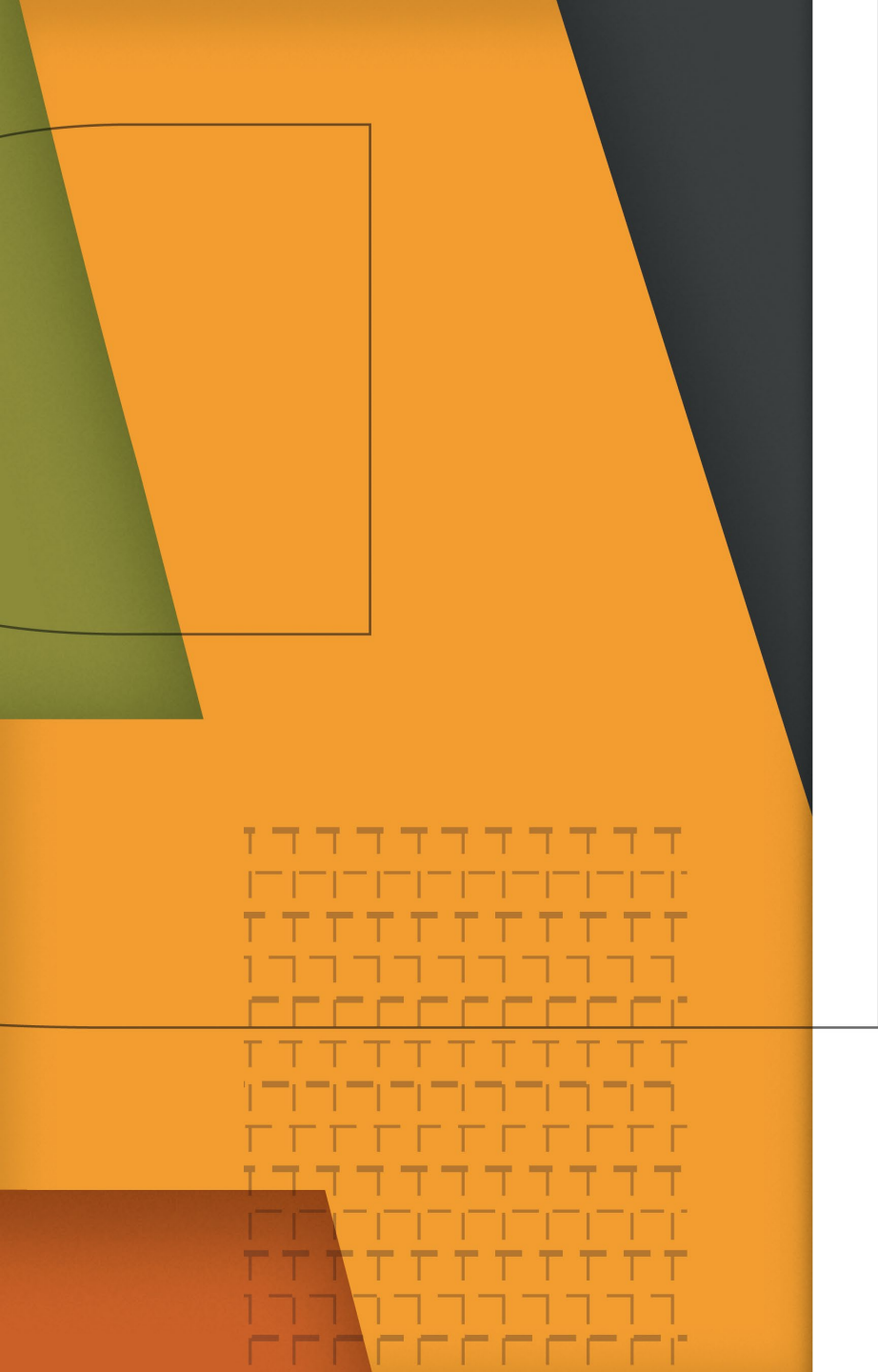
Choosing your path & company culture



Negotiation & advocacy



Work/life balance & career advancement



Mentorship, professional associations & giving back



Today's Presenters



**Edward
Kinney,**

ekinney@greenvillesc.gov



**Candace
Dillingham,**

candace@skiila.com



**Paul
Kissinger,**

pdkiss@umich.edu



**Lindsey D.
Smith,**

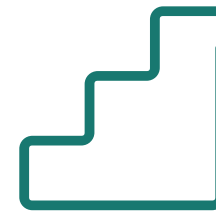
ldsmith1906@gmail.com

Please share your thoughts!

Responses are requested by October 15.



Leading People, Embracing Change



LEADERSHIP
DEVELOPMENT
PROGRAM

CLARB

October 15, 2025
3:00 – 4:30 p.m. EDT